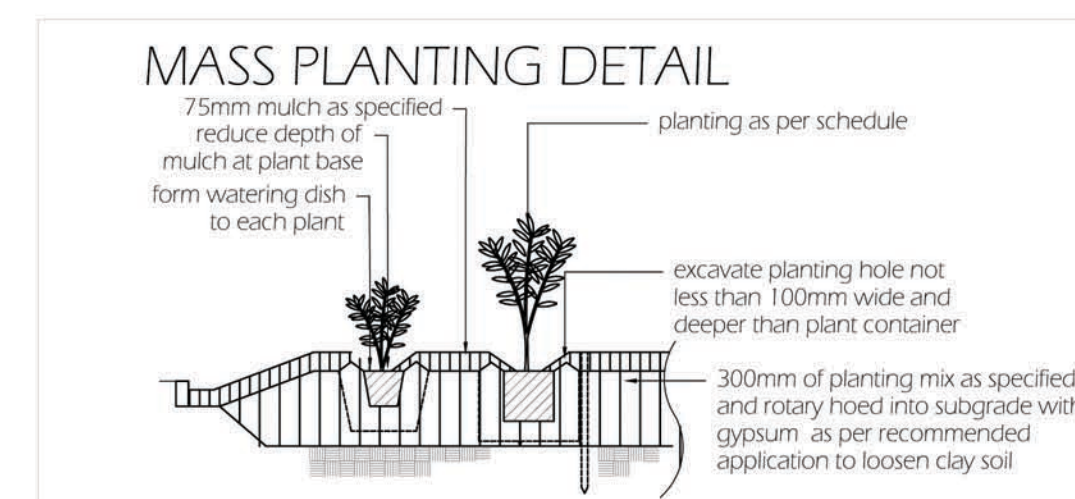
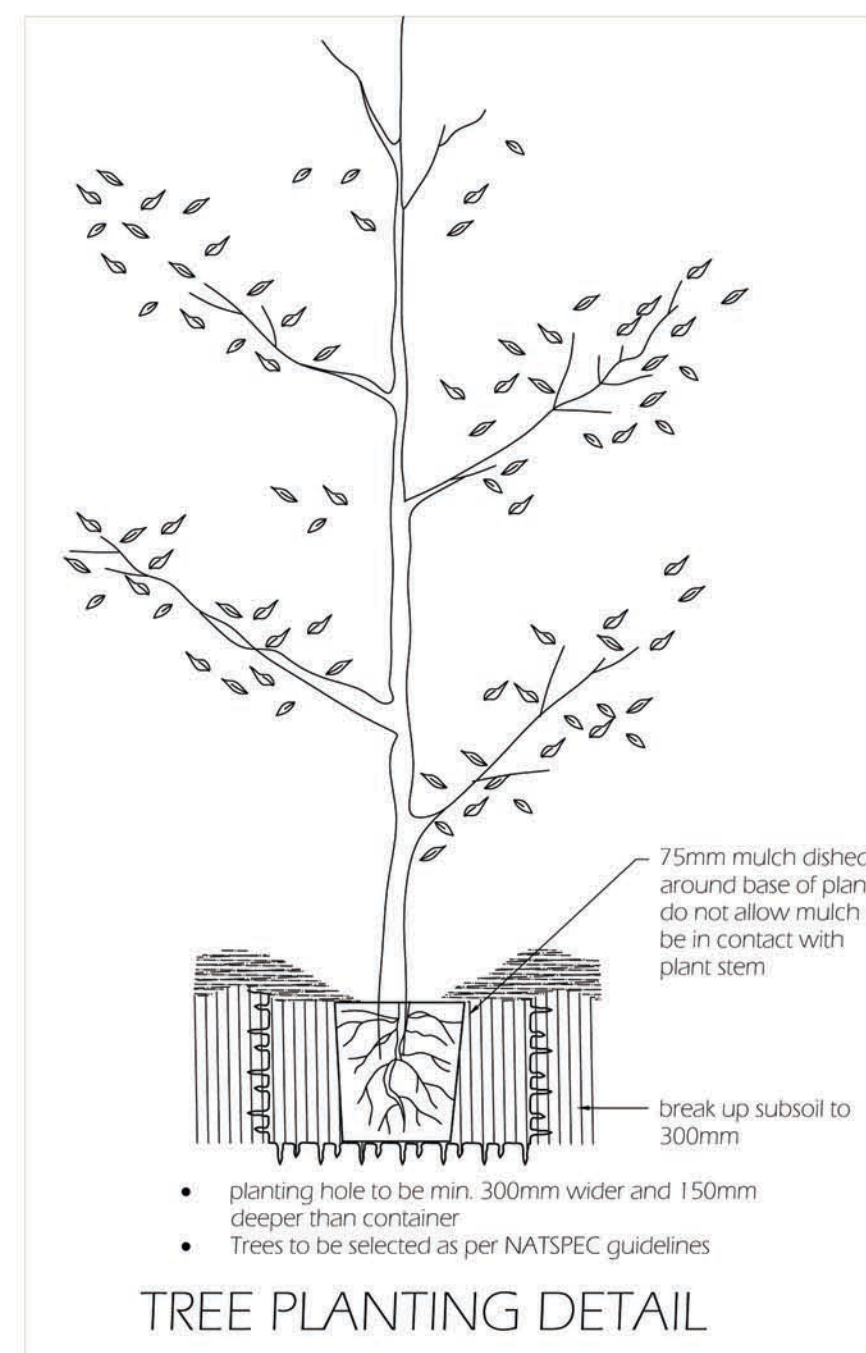
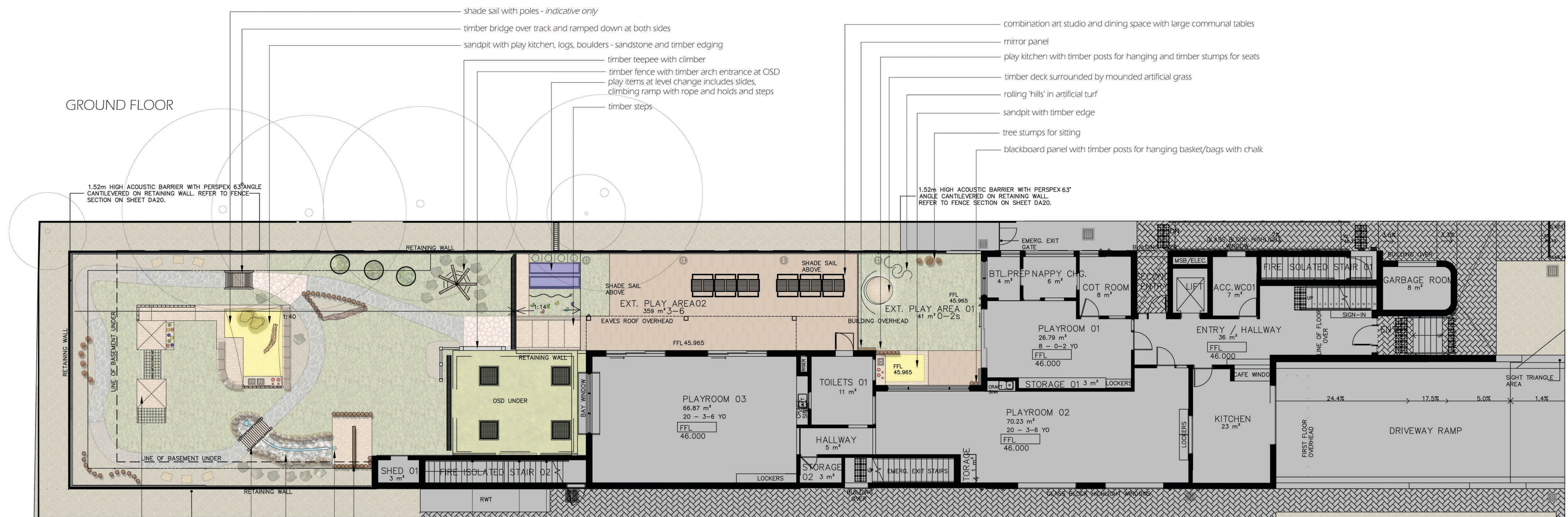
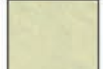




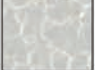









GROUND FLOOR



- ### LEGEND
- | | | | |
|---------------------------------------------------------------------------------------|-------------------------------------------------------------|---------------------------------------------------------------------------------------|----------------------------------------------------------------------------------------------|
|  | artificial grass - 40mm pile - Summer Prestige - or similar |  | turf species to be confirmed - Empire Zoisya |
|  | mulch |  | remnant tree log - seating/balancing |
|  | cobblestones - charcoal |  | tree stumps min 0.3mØ and max height 0.6m |
|  | hardwood timber decking - spotted gum |  | large stone boulders |
|  | stoneser permeable paving - arctic |  | 200mmØ H/W timber poles to 1.2m in height at timber deck. 0.30m at garden bed |
|  | sandstone flagging paving |  | formbox: corten round edible gardens with timber platform |
|  | pebbles over 50mmØ for creek bed |  | bluestone crazy pave stepping stones or similar |
|  | timber look tiles |  | sandstone boulders for edging and sitting space |
| | |  | timber poles at random heights of 0.9, 1 and 1.1m to act as informal internal edging/fencing |

timber
Use hardwood timber only preferably *Spotted Gum* for all visible timber sections & treated Durability class 1, H4 for in ground use & H3 otherwise. Use of sustainable hardwood timbers are preferred. Open timber features such as knot holes, loose or unsound knots, gum pockets, loose gum veins, shakes & termite galleries not to be used on the outer surface of timber. All timber contactable by hand shall be dressed or sanded smooth & free of splinters & shavings. All bolted connections shall use washers under bolt heads & nuts & all external bolts, nuts, washers & decking screws shall be stainless steel. All exposed timber to be sealed with *Sikkens Cetol HLS* in Mahogany shade.

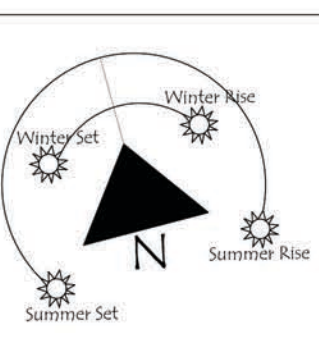
The playspace areas allow for 30% solar access to children at all times while incorporating a mix of shade provided by canopy trees and built forms

Tessa Rose Playspace and Landscape Design reserves all rights. This drawing is copyright and shall not be reproduced or copied in any form or by any means without the written permission of Tessa Rose Playspace and Landscape Design. Any license, expressed or implied to use this document for any purpose is restricted to the terms of the written agreement between Tessa Rose Playspace and Landscape Design and the instructing party



8 Hughes Ave, LAWSON NSW 2783
0416 565297
tess@tessaroselandscapes.com.au
www.tessaroselandscapes.com.au

PROJECT:
Proposed Child Care Centre
86 The Avenue
BANKSTOWN NSW 2200



TESSA ROSE
PLAYSPACE AND LANDSCAPE DESIGN

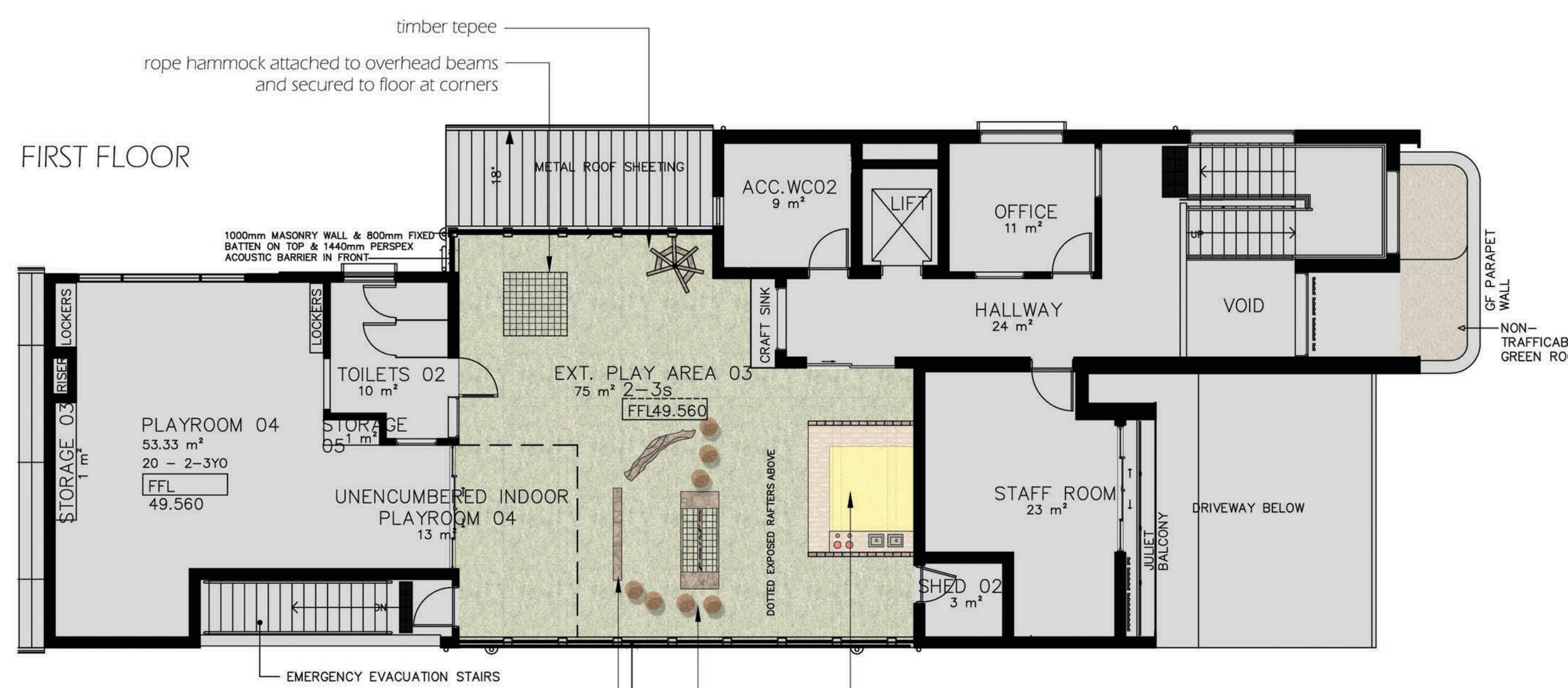
date: 18 June 2024 ■ drawing no. 2/2
scale: 1:100/A1 ■ drawn by: cs & tm

drawing notes

1. Contractor should check site conditions and measurements prior to works
2. No substitutions for plants and materials may occur without prior approval

This plan is certified as meeting all relevant local government DCP's & legislation and the *Education and Care Services National Regulations 2011*

FIRST FLOOR



handles attached to overhead beams with timber balance beam below
rope bridge with rope sides and timber platforms at each end
sandpit with play kitchen and timber deck and timber posts

Australian Standards
All materials & workmanship shall be in accordance with the relevant standards of the Standards Association of Australia.

- Part 0 – Development, installation, inspection, maintenance and operation
- Part 1 – General safety requirements & test methods
- Part 2 – Additional specific safety requirements & test methods for swings
- Part 3 – Additional specific safety requirements & test methods for slides
- Part 4 – Additional specific safety requirements & test methods for runways
- Part 5 – Additional specific requirements & test methods for carousels
- Part 6 – Additional specific requirements & test methods for rocking equipment
- Part 11 – Additional specific safety requirements & test methods for spatial networks

Australian Standard AS 4422: Playground surfacing - Specifications, requirements and test method

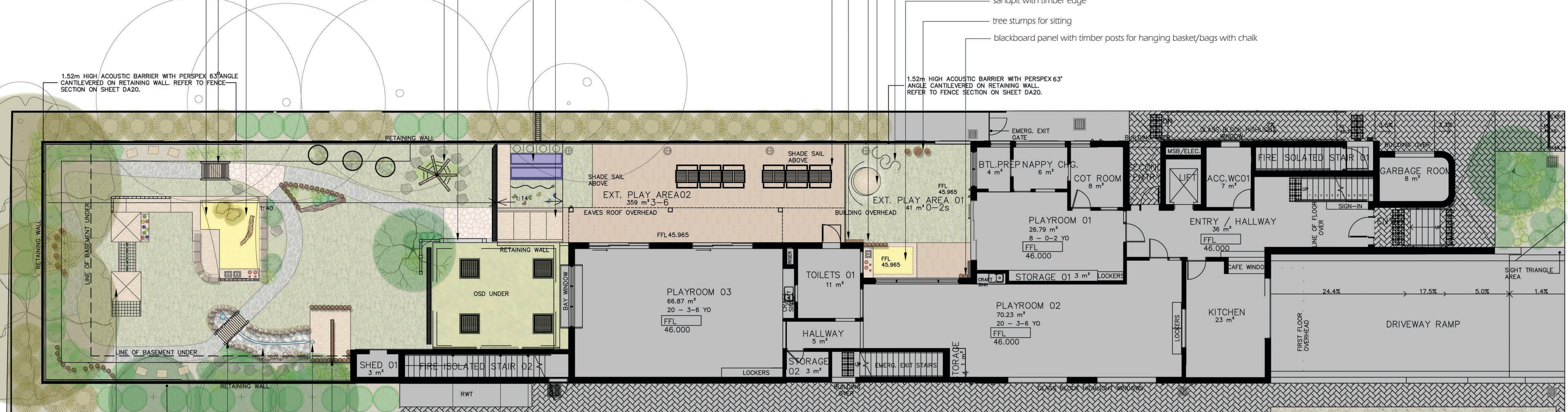
- Australian Standard AS 4422: Playground surfacing - Specifications, requirements and test method
- Australian Standard AS 1428: Design for access and mobility
- Part 1 - General requirements for access - New building work
- Part 2 - Enhanced and additional requirements - Building and facilities
- Part 3 - Requirements for children and adolescents with physical disabilities
- Part 4 - Means to assist the orientation of people with vision impairment - Tactile ground surface indicators
- Part 5 - Communication for people who are deaf or hearing impaired

Australian and New Zealand Standard AS/NZS 8124 Part 6 (ISO 8124-4:2014, MOD) Safety of toys - Swings, slides and similar activity toys for indoor and outdoor family domestic use
Australian and New Zealand Standard AS/NZS ISO 31000: Risk management - Principles and guidelines;
Australian Standard TR EN 17519:2021: Synthetic turf facilities

FINAL
GROUND & FIRST FLOOR
playspace-landscape - surfaces

Dial Before U Dig - all services to be checked prior to works commencement




GROUND FLOOR



FIRST FLOOR



TREES TO BE RETAINED		PLANTS				
		RELS				
symbol	botanical name	common name	height	width	pot size	qty
	waterhousea floribunda 'green avenue'	green avenue weeping lillypilly	15m	9m	100L	2
	agonis flexuosa burgundy	burgundy Willow Myrtle	5-8m	3-4m	100L	1
	elaecarpus reticulatus 'prima donna'	prima donna blueberry ash	5-10m	3-4m	100L	3
SHRUBS						
	syzygium 'straight and narrow'	straight and narrow lilly pilly	5m	1m	200mm	30
	westringia fruticosa 'blue heaven'	blue heaven coastal rosemary	1.5-2m	1-1.5m	200mm	20
	kalanchoe hildebrandtii	silver spoons	0.6-1m	0.6-1m	200mm	5
	correa alba 'star showers'	n/a	0.4m	1m	200mm	2
	westringia fruticosa 'grey box'	coastal rosemary	0.30-0.45 m	0.30-0.45m	200mm	8
	lavenderula augustifolia 'lavender lady'	lavender lady	0.3m	0.3m	180mm	7
	crassula undulatifolia	cutty jade	0.3m	0.3m	180mm	3
GRASSES/GROUNDCOVERS/TWINERS/CLIMBERS						
	rosmarinus officinalis prostate	prostrate rosemary	0.3-0.6m	1-2m	150mm	2
	blechnum nudum	silver lily fern	0.6-1m	0.60-1m	150mm	15
	myoporum parvifolium 'yareena'	creeping boobiala yareena	0.1m	1m	140mm	18
	viola hederaceae	native violet	0.15m	2m	150mm	8
	dianella 'breeze'	n/a	0.7m	0.7m	150mm	25
	lamandra longifolia 'verday'	n/a	0.7m	0.7m	150mm	12
	hardenbergia 'happy wanderer'	n/a	0.5m	1-3m	150mm	11

- | LEGEND | |
|---------------------------------------------------------------------------------------|----------------------------------------------------------------------------------------------|
|  | artificial grass - 40mm pile - Summer Prestige - or similar |
|  | mulch |
|  | cobblestones - charcoal |
|  | hardwood timber decking - spotted gum |
|  | stoneset permeable paving - arctic |
|  | sandstone flagging paving |
|  | pebbles over 50mmØ for creek bed |
|  | timber look tiles |
|  | turf species to be confirmed - Empire Zoisya |
|  | remnant tree log - seating/balancing |
|  | tree stumps min 0.3mØ and max height 0.6m |
|  | large stone boulders |
|  | 200mmØ H/W timber poles to 1.2m in height at timber deck, 0.30m at garden bed |
|  | formboss corten round edible gardens with timber platform |
|  | bluestone crazy pave stepping stones or similar |
|  | sandstone boulders for edging and sitting space |
|  | timber poles at random heights of 0.9, 1 and 1.1m to act as informal internal edging/fencing |

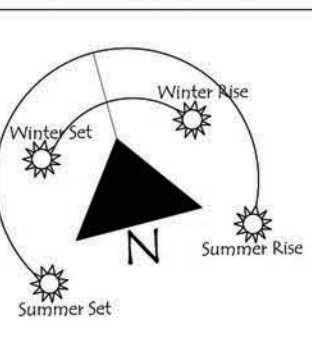
- ## NOTES
- soil and mulch
- Use an Australian Standard planter mix with low phosphorus for where natives have been specified & other good quality soil mix in other areas with a min of 5% OM - mulch - Use mulch with material size greater than 15mm only - recommend Eucy Mulch material substitutions
- Materials which are not available or cannot be reasonably provided for the works may be substituted in consultation with the client
- Planting shall be vigorous, well established, hardened off, of good form consistent with the species or variety, free from disease & insect pests, with large healthy root systems & no evidence of having been restricted or damaged . All plants to be planted in locations specified on this plan. Planting holes to be twice the pot size & all soil to loosely fill the planting hole. Plants must be watered before planting begins, immediately after planting and on a continual basis thereafter until established. Construct a watering basin around the base of each individual planted tree

Tessa Rose Playspace and Landscape Design reserves all rights. This drawing is copyright and shall not be reproduced or copied in any form or by any means without the written permission of Tessa Rose Playspace and Landscape Design. Any license, expressed or implied to use this document for any purpose is restricted to the terms of the written agreement between Tessa Rose Playspace and Landscape Design and the instructing party



8 Hughes Ave, LAWSON NSW 2783
0416 565297
tess@tessaroselandscapes.com.au
www.tessaroselandscapes.com.au

PROJECT:
Proposed Child Care Centre
86 The Avenue
BANKSTOWN NSW 2200



TESSA ROSE
PLAYSPACE AND LANDSCAPE DESIGN

date: 18 June 2024
scale: 1:100/A1

drawing notes

1. Contractor should check site conditions and measurements prior to works
2. No substitutions for plants and materials may occur without prior approval

This plan is certified as meeting all relevant local government DCP's & legislation and the *Education and Care Services National Regulations 2011*

FINAL
GROUND & FIRST FLOOR
playspace-landscape - plants

Dial Before U Dig - all services to be checked prior to works commencement

Australian Standards
All materials & workmanship shall be in accordance with the relevant standards of the Standards Association of Aus.

- Part 0 – Development, installation, inspection, maintenance and operation
- Part 1 – General safety requirements & test methods
- Part 2 – Additional specific safety requirements & test methods for swings
- Part 3 – Additional specific safety requirements & test methods for slides
- Part 4 – Additional specific safety requirements & test methods for runways
- Part 5 – Additional specific requirements & test methods for carousels
- Part 6 – Additional specific requirements & test methods for rocking equipment
- Part 11 – Additional specific safety requirements & test methods for spatial networks

- Australian Standard AS 4422: Playground surfacing - Specifications, requirements and test methods
- Australian Standard AS 1428: Design for access and mobility
- Part 1 - General requirements for access - New building work
- Part 2 - Enhanced and additional requirements - Building and facilities
- Part 3 - Requirements for children and adolescents with physical disabilities
- Part 4 - Means to assist the orientation of people with vision impairment - Tactile ground surface
- Part 5 - Communication for people who are deaf or hearing impaired

Australian and New Zealand Standard AS/NZS 8124 Part 6 (ISO 8124-4:2014, MOD) Safety of toys - Swings, slides and similar activity toys for indoor and outdoor family domestic use
Australian and New Zealand Standard AS/NZS ISO 31000: Risk management - Principles and guidelines;
Australian Standard TR CEN 17519:2021: Synthetic turf facilities

handles attached to overhead beams with timber balance beam below
rope bridge with rope sides and timber platforms at each end
sandpit with play kitchen and timber deck and timber posts

Sample board for Proposed Childcare Centre, 86 The Avenue, Bankstown, NSW - Prepared by Tessa Rose Playspace and Landscape Design Tuesday, 11 June 2024



Left to right: : Sandstone edged sandpit with building platforms, Dry creek bed, Timber bridge, Blackboard panel, Perspex easel panel, Multipurpose panel, Rainwell - Stainless steel pump, Outdoor kitchen,



Left to right: Log rounds for climbing, balancing & seating, Boulders for seating, Varied height timber panel screening, Play structure with scramble net, climbing wall, decking, railings and ramp access, Formboss -Corten edible garden – round, Low AG mounds for sitting & rolling etc,

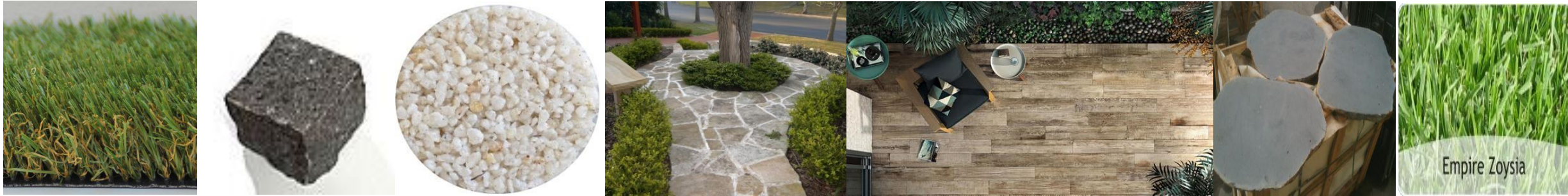


Left to right: Bamboo teepee seat, Water channel, Remnant logs for seating and balancing, Timber fence with arch entrance, Rope hammock, Rope bridge, Handles attached to beams, Slide, climbing wall and rope climbers upslope,

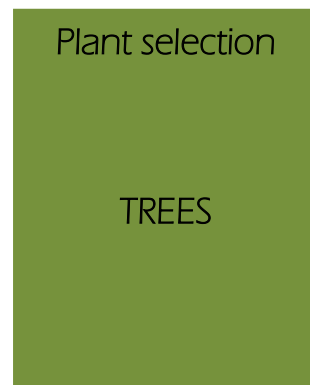


Timber steps, Timber poles for hanging sensory items e.g. herbs/wind chimes,

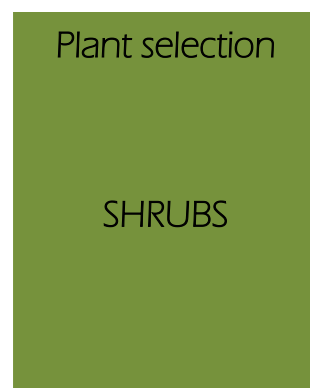
* Please note these images are to be considered in conjunction with your plan and are used to give an idea of colours, textures & constructs that will be present in the completed playspace.



Left to right: Artificial turf, Cobblestones – Charcoal, Stoneset – Arctic, Sandstone flagging paving, Timber look tiles, Bluestone pavers, Turf –Zoysia



Left to right: *Waterhousia* 'Green avenue', *Agonis flexuosa* 'Burgundy', *Elaeocarpus reticulatus* 'Prima Donna'



Left to right: *Syzygium australe* 'Straight and narrow', *Westringia fruticosa* 'Blue heaven', *Correa alba* 'Star showers', *Kalanchoe hildebrandtii* "Silver Spoons", *Lavandula angustifolia* 'Lavender Lady',



Left to right: *Crassula undulatifolia* 'Curly Jade',



Left to right: *Dianella caerulea* 'Breeze', *Hardenbergia violacea* 'Happy wanderer', *Myoporum parvifolium* 'Yareena', *Rosmarinus officinalis* prostrate, *Blechnum nudum* 'Silver Lady',



Left to right: *Lomandra longifolia* 'Verday', *Viola hederacea*,

* Please note these images are to be considered in conjunction with your plan and are used to give an idea of colours, textures & constructs that will be present in the completed playspace.